

CERTIFICATE OF TESTING



Leyland Technical Centre

CLIENT: Maxmade Limited
Reliance Works
Rainhill
Prescot
Merseyside L35 9JF

CLIENT'S REF: 3890

JOB NUMBER: MAX 0101

TEST PERIOD: 2/8/96 to 3/8/96

ISSUED TO: Mr. A.P. McCarthy

PAGE 1 OF 2

Aston Way
Leyland
Preston
PR5 3TZ
England

Tel: +44 (0)1772 422911
Fax: +44 (0)1772 621466

Title: Load Carrying Capacity of Coldstore Ceiling

Test standard(s): Customer Specified

Test piece description: Angle Swivel Hanger

Date test piece received: 7/8/96

METHOD

One Angle Swivel Hanger was assembled in accordance with Maxmade drawing TH53. The Uni Strut type channel was then grounded using the two U bolt clamps supplied and positioned at 260mm centres.

Load was then applied to the channel, channel spring nut and associated bracketry via a length of M12 BZP studding as detailed in Maxmade drawing TH53 using an hydraulic actuator and load cell.

See Figure 1 Photograph showing the test set up.

RESULTS

One Angle Swivel Hanger when assembled in accordance with Maxmade drawing TH53 withstood a static loading of 810kgs

The load applied to the Angle Swivel Hanger was 1.5 times the load seen by support when used at a maximum span of 1.8 metres when supporting a 300kg/m uniformly distributed load.
i.e. $1.8 \times 300 \times 1.5 = 810\text{kg}$ (7.95kN)

At maximum load a deflection of 0.67mm was recorded at a position approximately 30mm outboard of the loading position.

Upon removal of load a resulting permanent deformation of 0.3mm was recorded. No visual signs of structural failure were apparent.

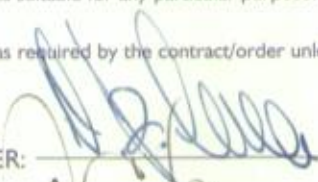
TEST EQUIPMENT USED


1 off 50kN Mayes Load Cells	LDC 125
1 off Shape Readout Units	LOI 007
1 off Dial Test Indicators	DIG 148

No representation or warranty is given that tests performed under the terms of the Contract constitute, in themselves, a sufficient programme for the customer's purpose, nor that customer's equipment tested is suitable for any particular purpose.

Certified that the specimens detailed hereon have been subjected to the tests as required by the contract/order unless otherwise stated above.



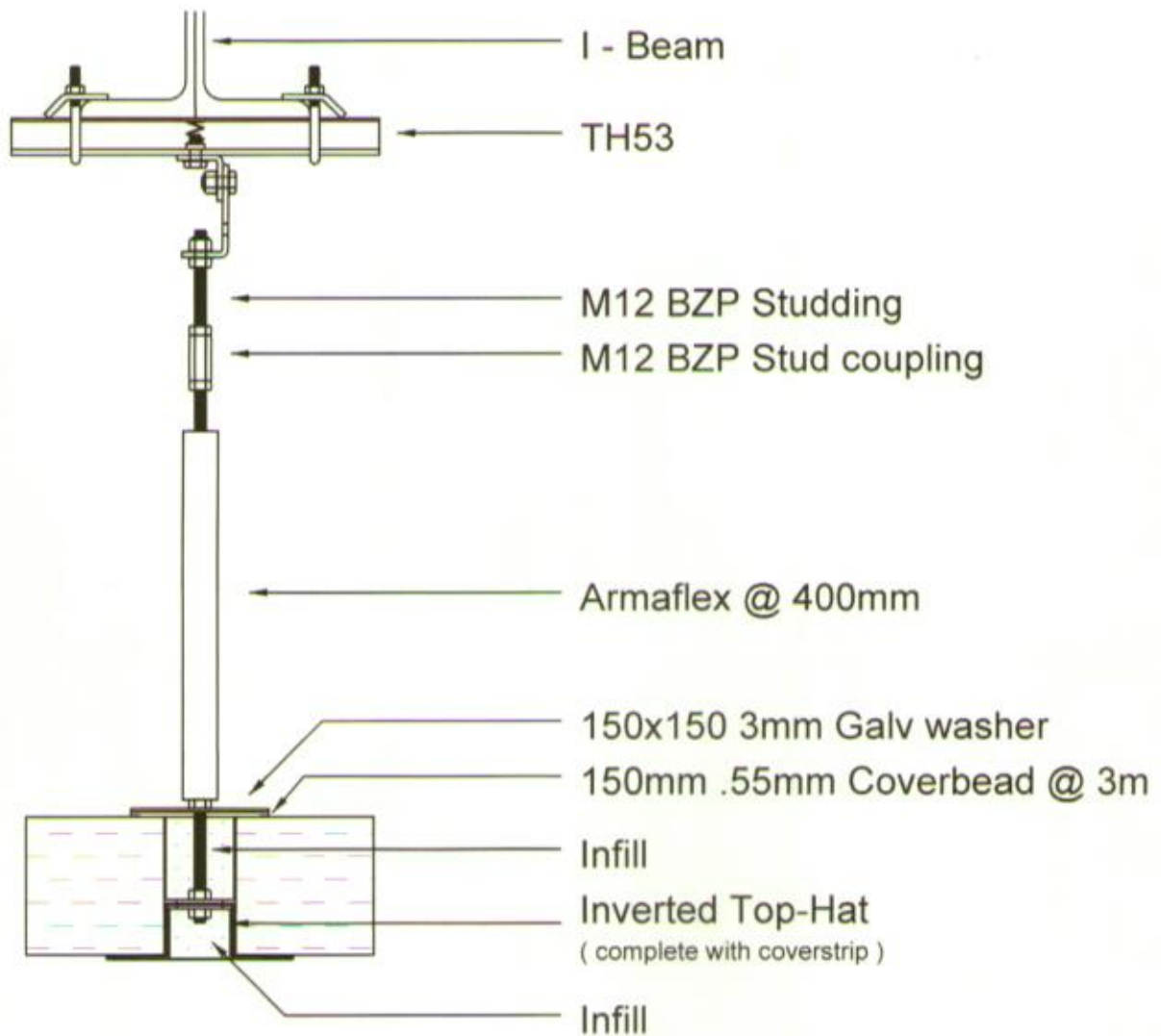
TEST ENGINEER: 

APPROVED BY: 

ISSUE DATE: 13/9/96

Typical Use of TH53 Swivel Assembly

Typical example of TH53 in use with Inverted Top-Hat, also show is the use of Armaflex and infills to increase the level of insulation around the top hat. Infills can be supplied in either Styrofoam or Rockwool.



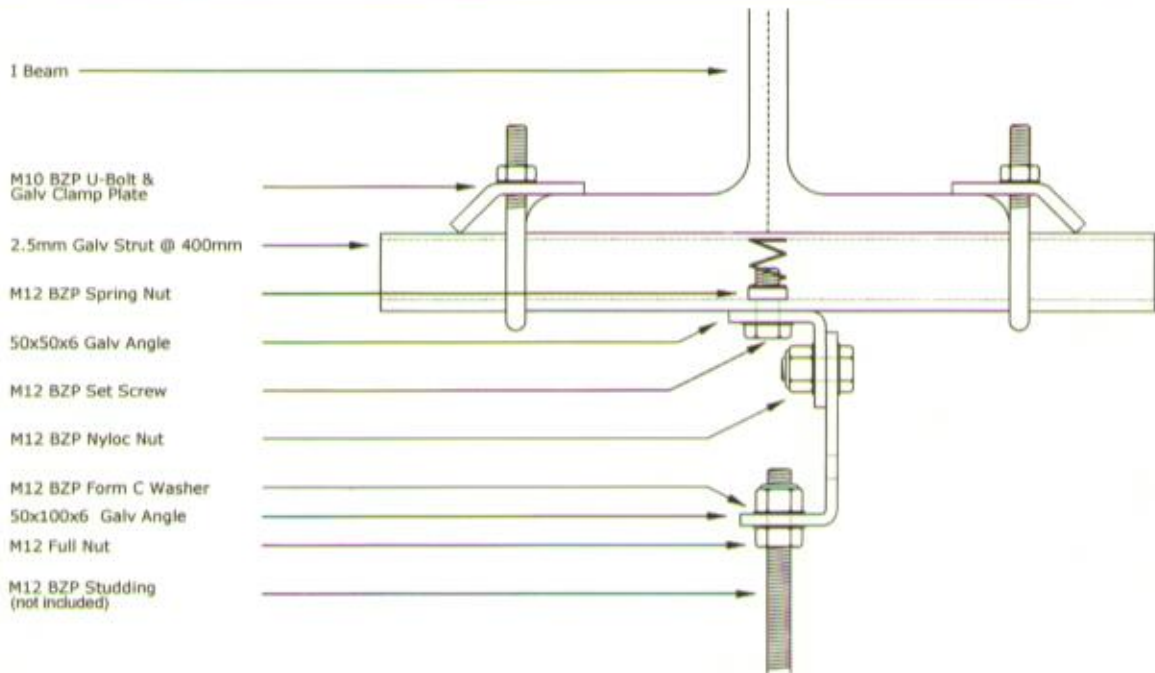
Drawing No TH53/2 Issue 01/04



MAXMADE LIMITED

Stoney Lane, Rainhill, Prescot, Merseyside L35 9ND
Telephone: 0151 430 9797 Fax: 0151 493 1320
E-Mail: sales@maxmade.com / Website: www.maxmade.com

TH53 Swivel Assembly

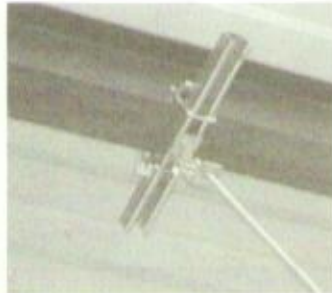


The TH53 angle swivel hanger is designed for use with our ceiling support sections. It has been tested by an independent body and was tested to withstand a static loading of 810 kg. A full test report is available on request from our sales team.

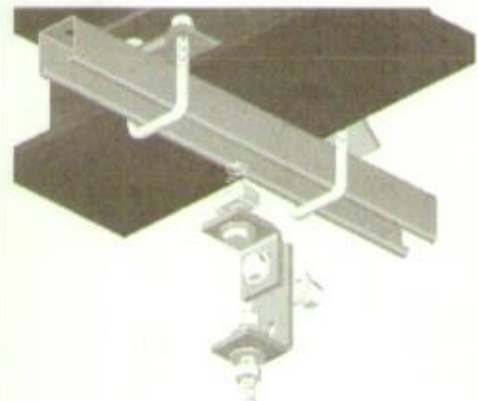
We offer the added benefit of assembling the TH53 unit into a kit, cut off the shrink-wrap, and the unit is assembled together ready for use, saving you valuable time on site.



TH53 wrapped for delivery



Picture showing TH53 in use



Exploded view showing of TH53.

Drawing No TH53

Issue 01/04



MAXMADE LIMITED

Stoney Lane, Rainhill, Prescot, Merseyside L35 9ND
 Telephone: 0151 430 9797 Fax: 0151 493 1320
 E-Mail: sales@maxmade.com / Website: www.maxmade.com



Figure 1 Photograph showing a general view of the Angle Swivel Hanger under load.
Photo No. TC 105808

